

Holiday Gift Bag

By Yvonne Ellsworth
lavendersheep.blogspot.com

Yarn: One Skein Ivy (50% alpaca, 45% merino, 5% estellina,
137 yards / 50 grams)

Color Pictured: #0100 Natural

Needles:

US 8 (5 mm) in 16" circular needle

US 8 (5 mm) in DPNs

Notions:

-One Counter

-1 Sewing Needle



Gauge: 25 sts and 32 rows = 4" (10 cm) in Stockinette Stitch (St st)

Glossary:

K : Knit

P : Purl

st: stitch

M: Marker

YO: Yarn Over

K2tog: Knit 2 sts together

sts: stitches

RS: right side

BO: Bind Off

CO 60 sts

Place M or counter, join in the round

Rnd 1: K

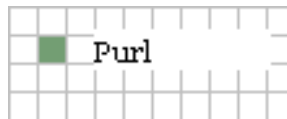
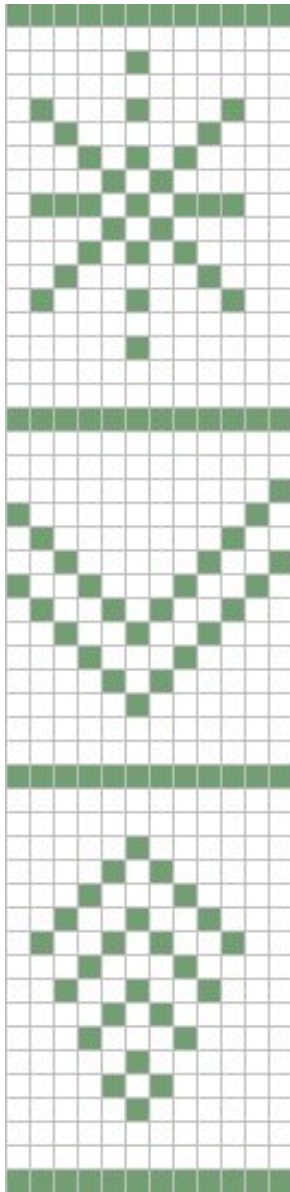
Rnd 2: P

Repeat 1 x more

Rnd 5-7: K (**note:** if you would like a longer top add the knit rows here, 5-10 should do it. Make sure that if you do knit more rows that you remember that this will change the Rnd numbers below)

Rnd 8: *K8, YO, K2tog* repeat to end

Rnd 9-11: K



Start Chart at the bottom right. Repeat across for every row.

When finished with the chart continue here:

Rnd 63: K while placing a M every 10 sts.

Rnd 64 *K to 2 sts before m, K2tog, slip M* repeat to end

Rnd 65: K

Repeat Rnds 64 & 65 until 24 sts remain. Change to DPNs when knitting begins to feel tight.

Next Rnd: *K2tog* repeat to end

Next Rnd: K

Cut a long tail, sew through each loop on the needle like a hat.

Make an I-Cord:

CO 4 sts on the DPN

Row 1: K

Row 2: Slide the sts to the other end and K

Continue in this manner until the cord measure 16" or desired length.

Sew in Ends

Fill your bag with goodies and enjoy!